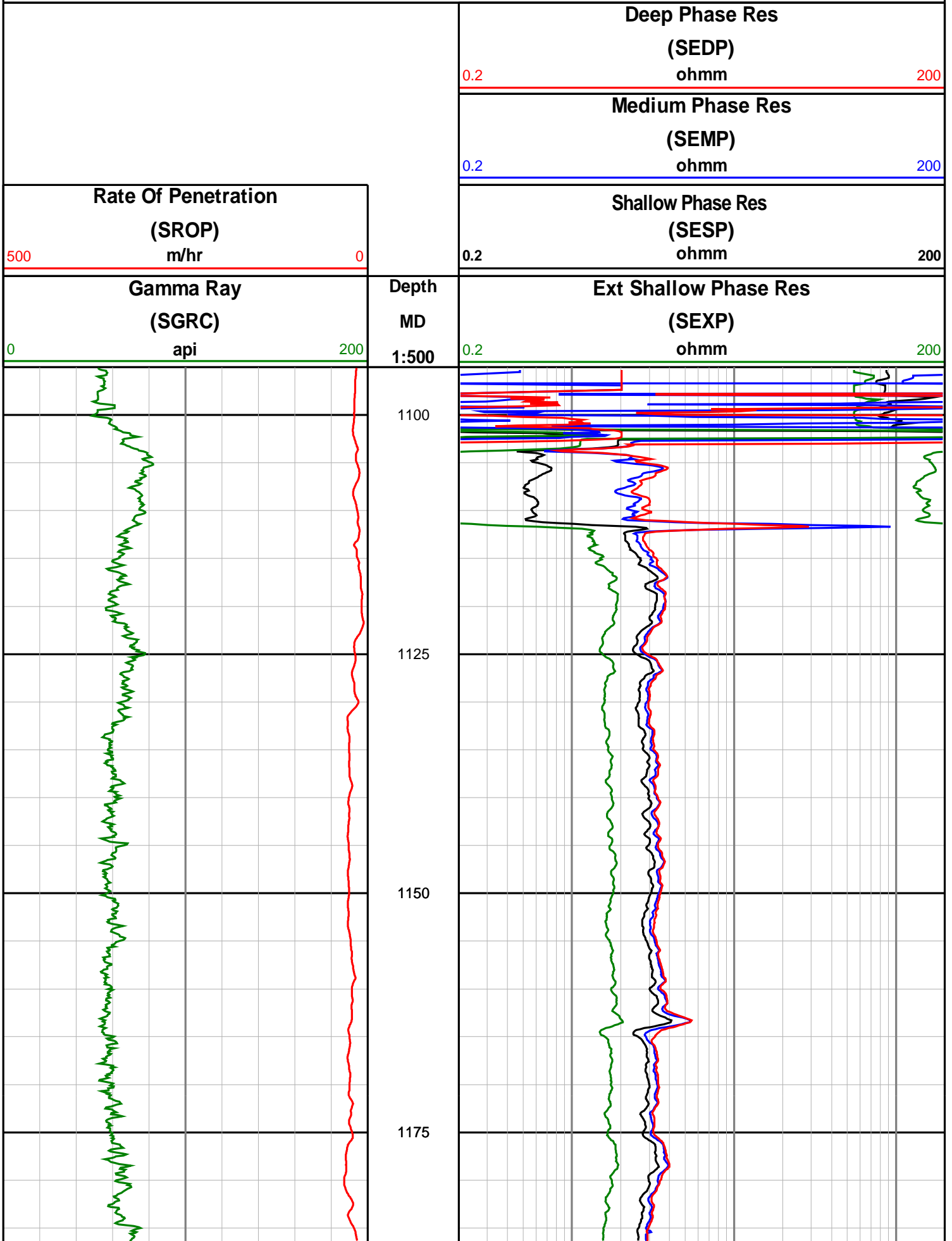


# Anzon Australia Ltd

## Basker-3

Recorded/Realtime LWD Log (Permanent Datum - LAT)





1200

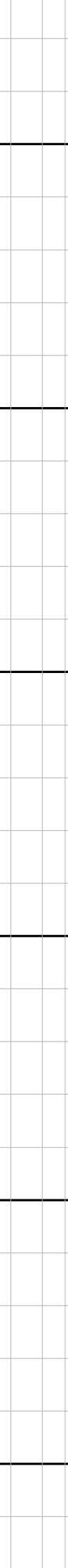
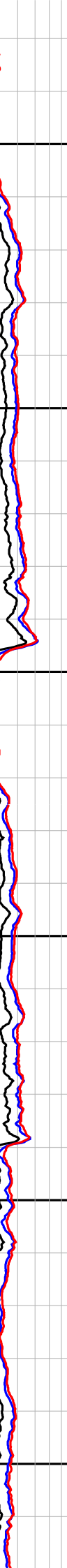
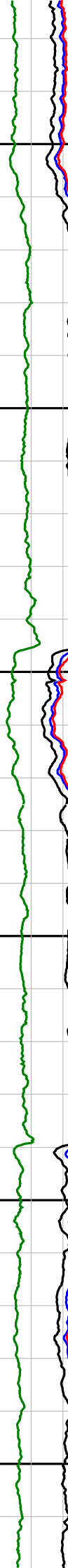
1225

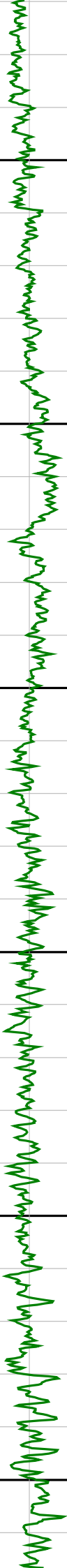
1250

1275

1300

1325





1350

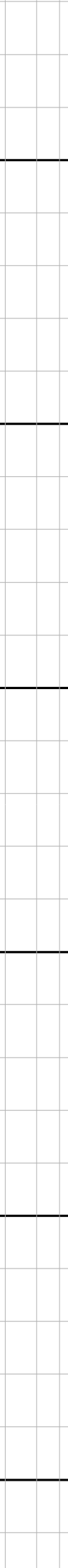
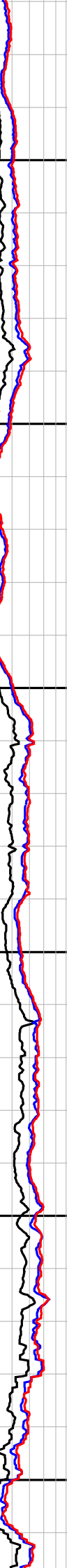
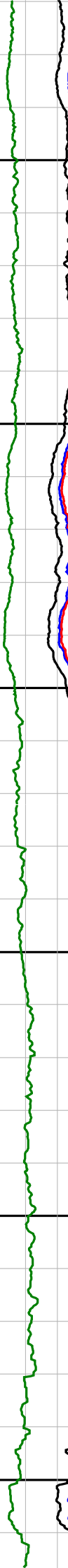
1375

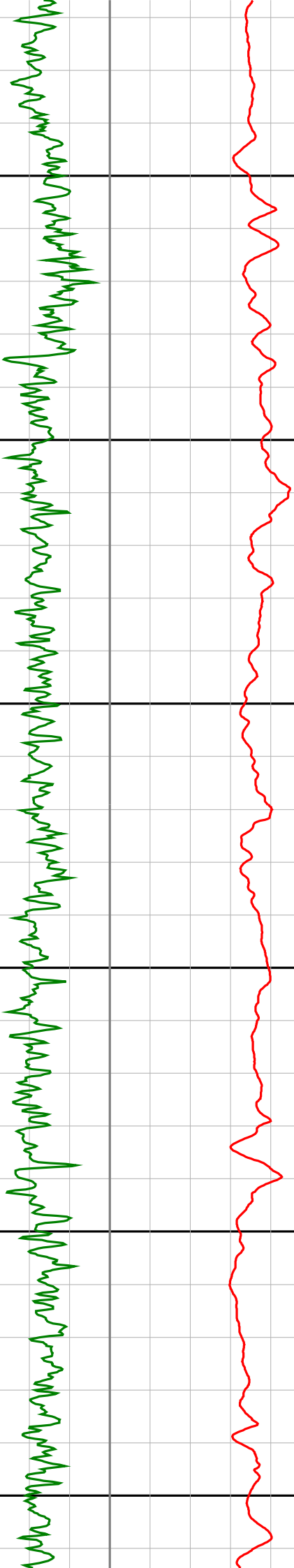
1400

1425

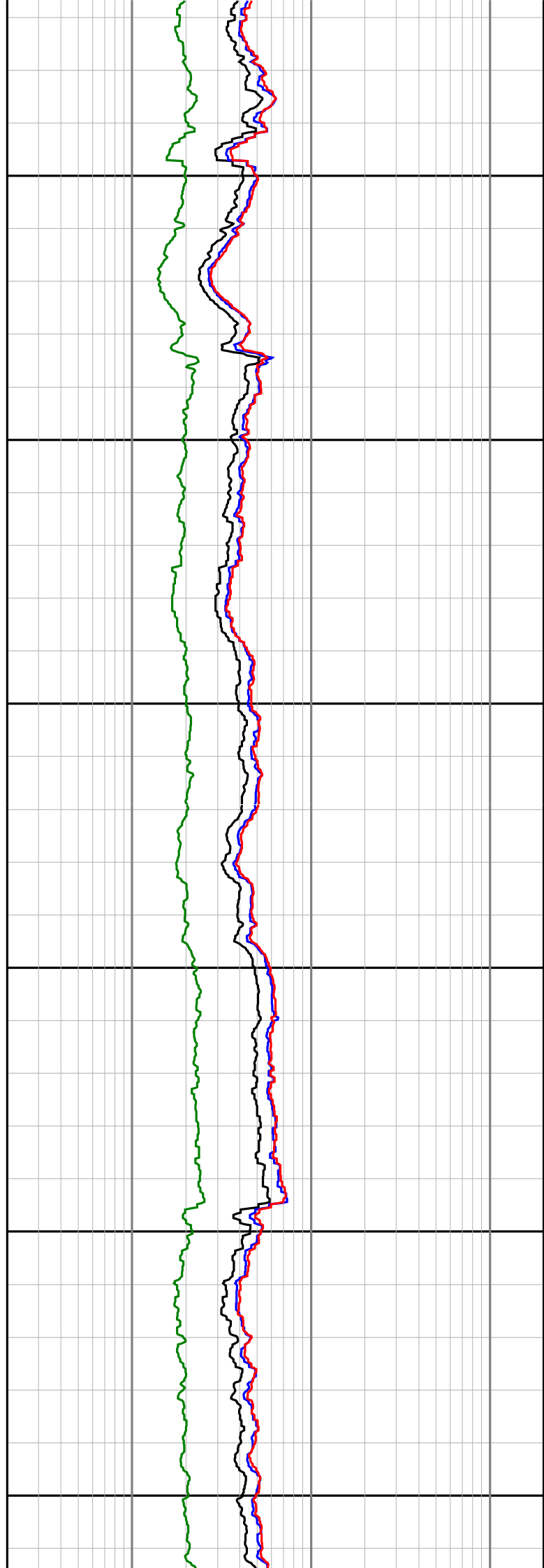
1450

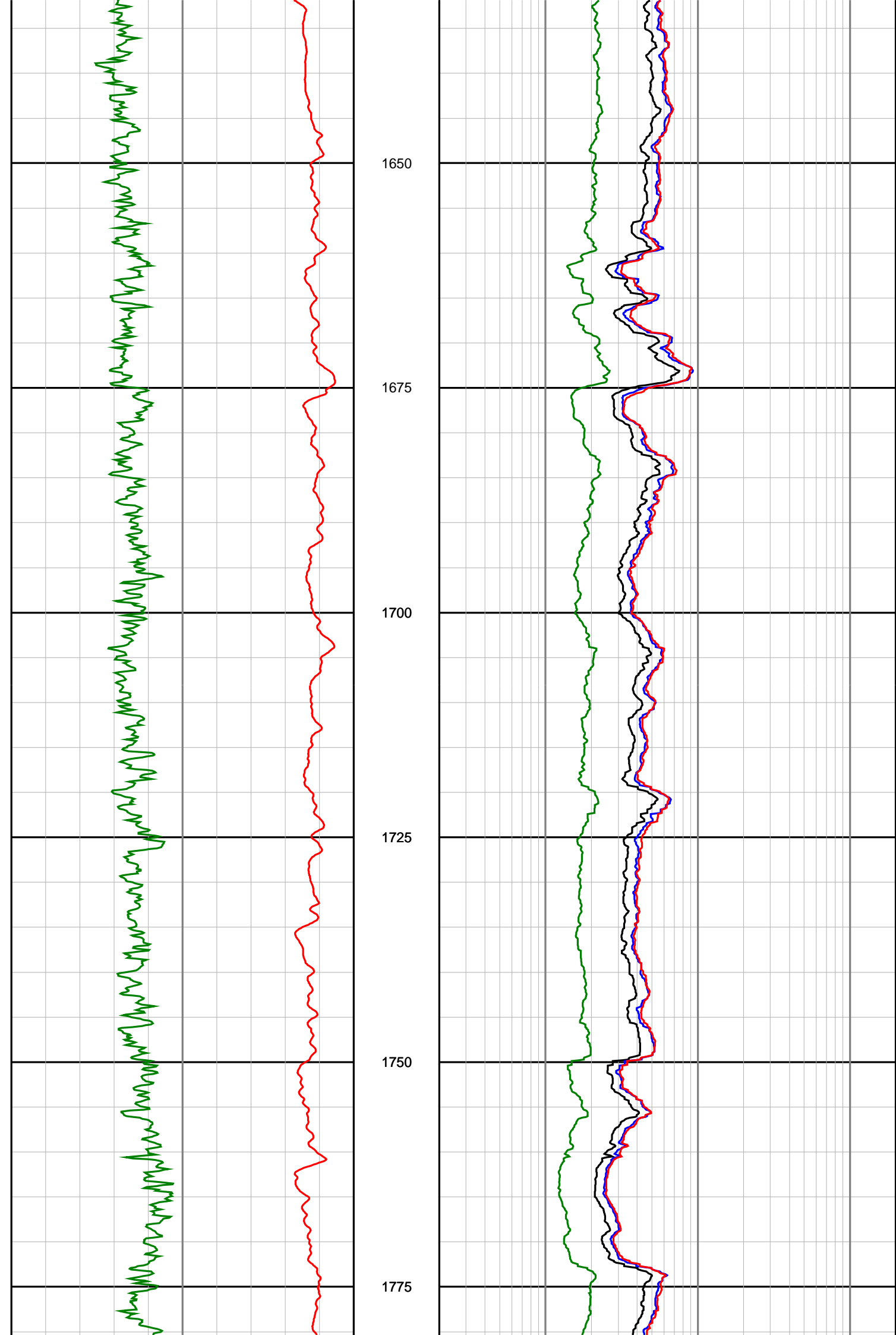
1475

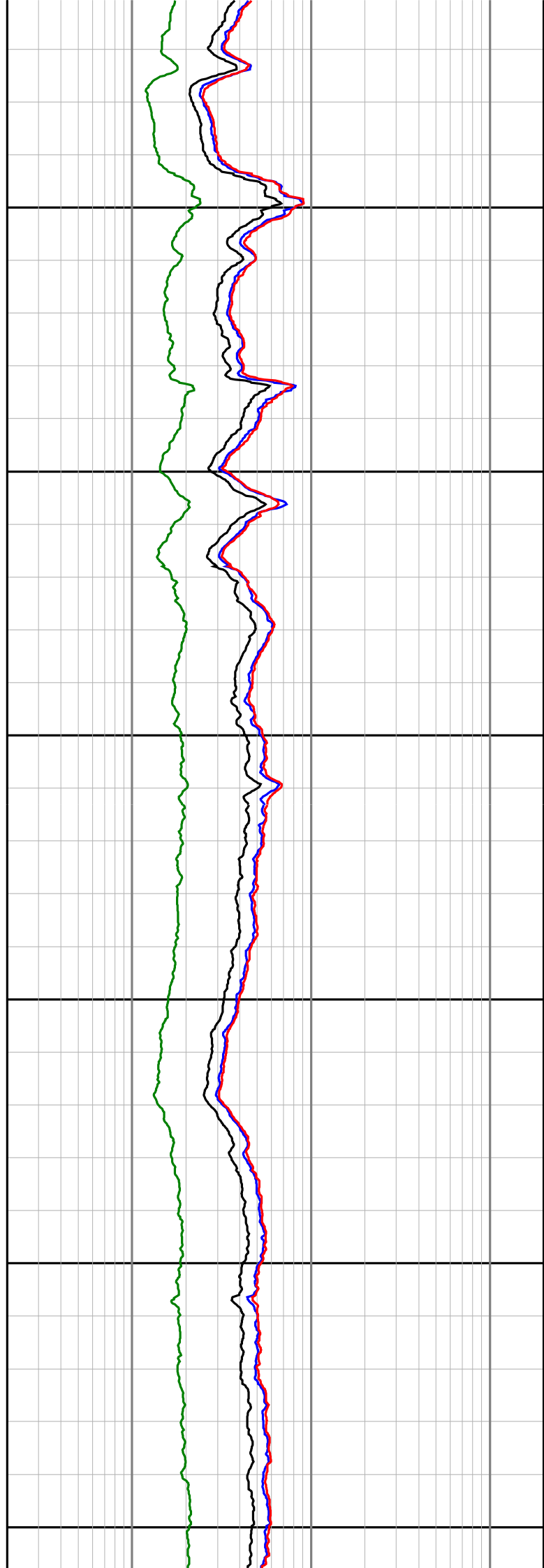
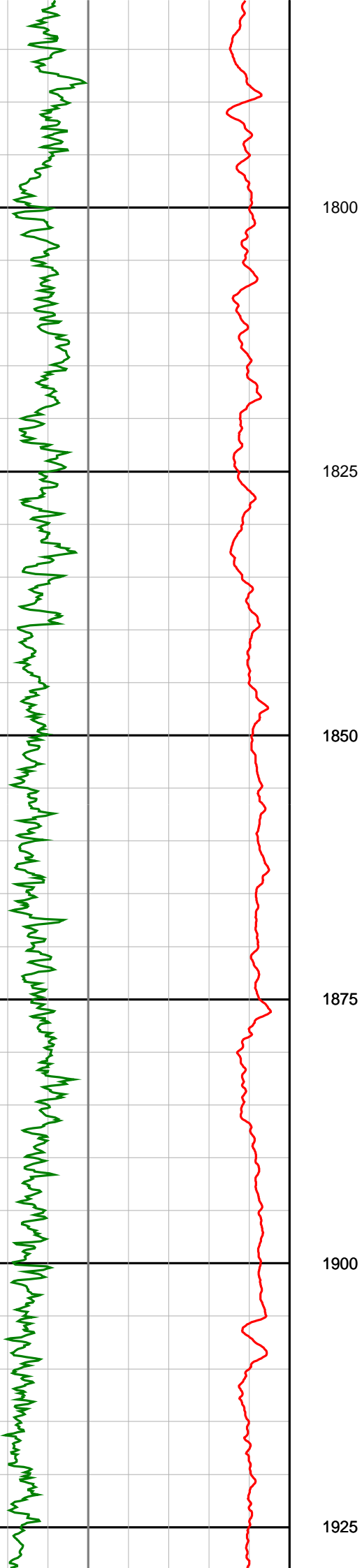


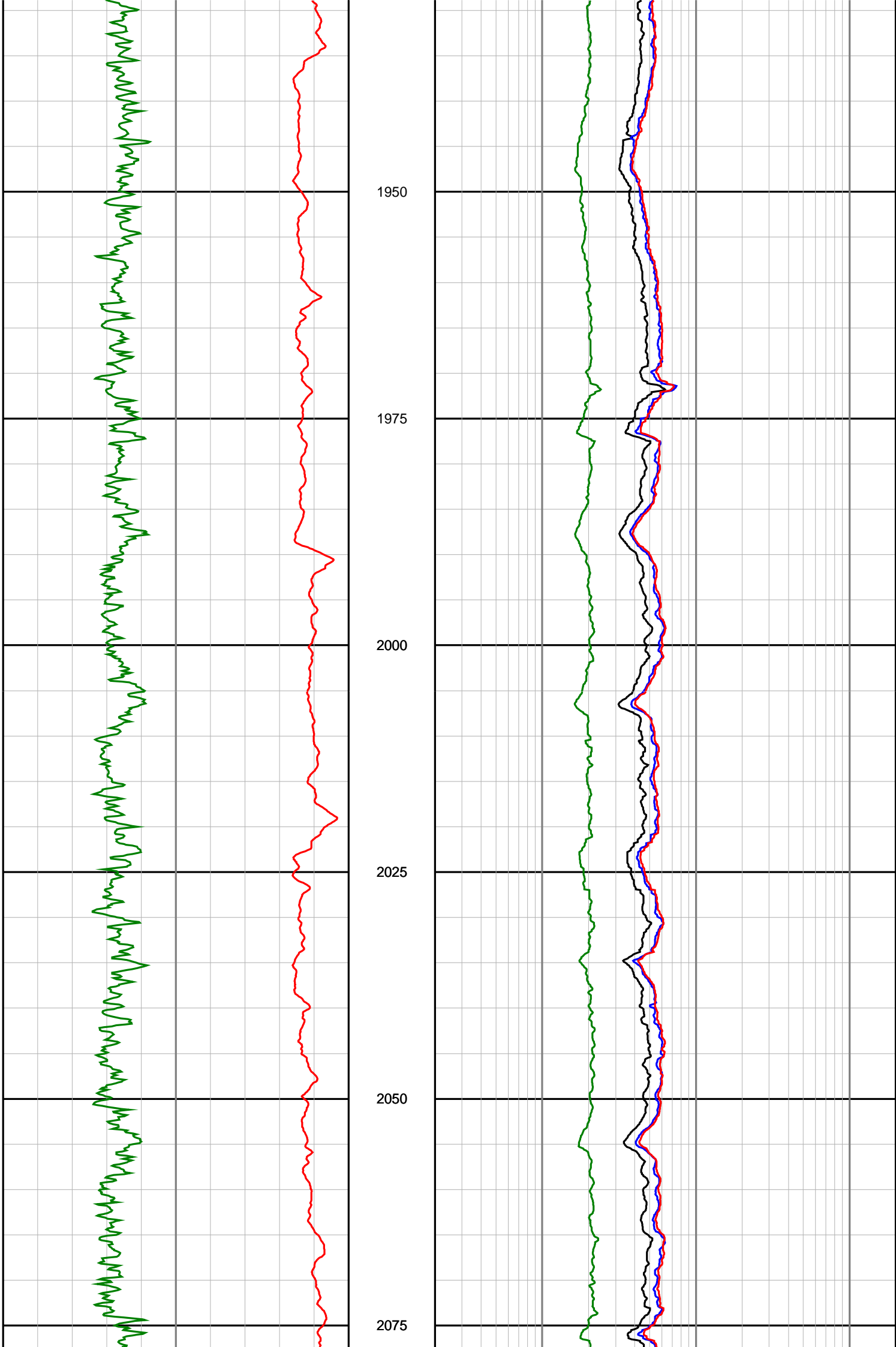


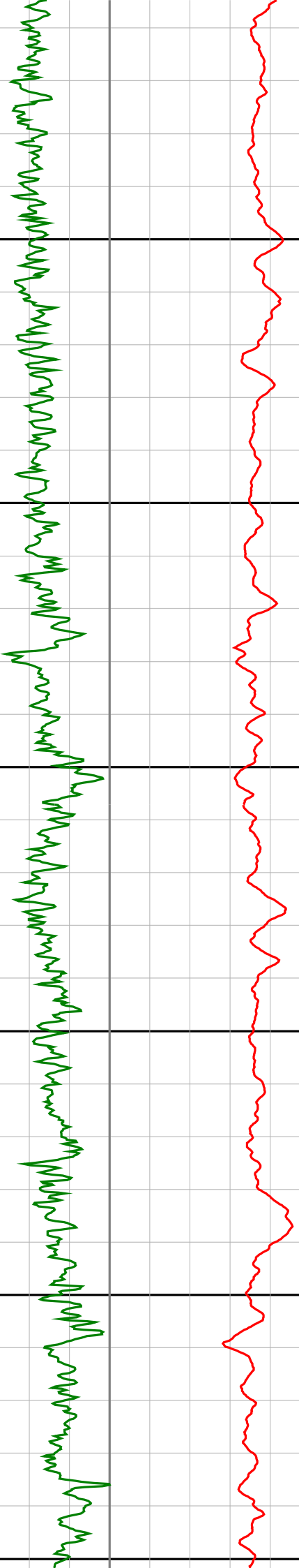
1500  
1525  
1550  
1575  
1600  
1625











2100

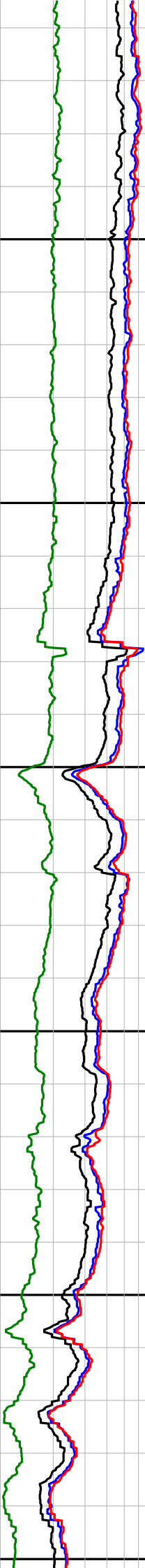
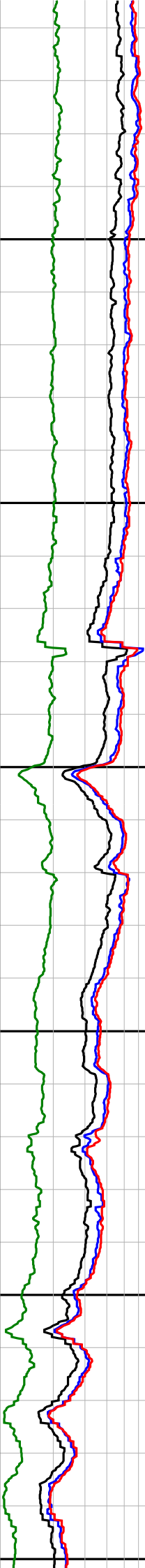
2125

2150

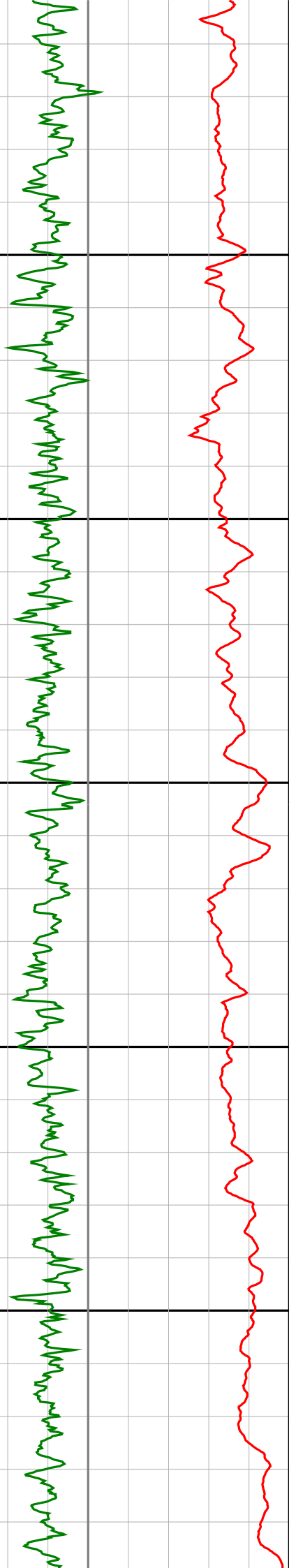
2175

2200

2225







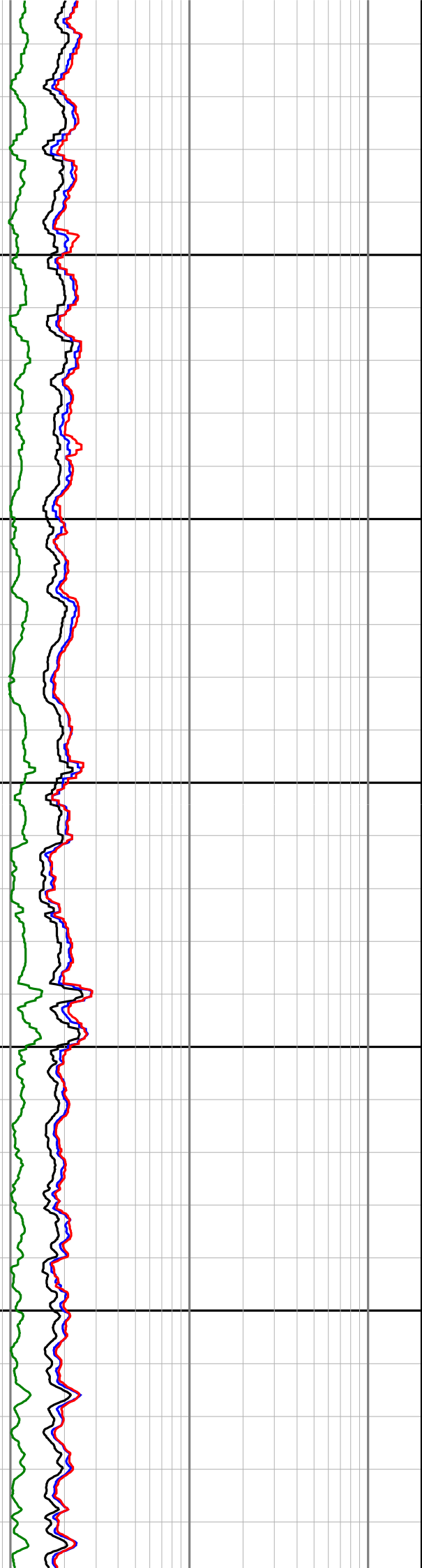
2250

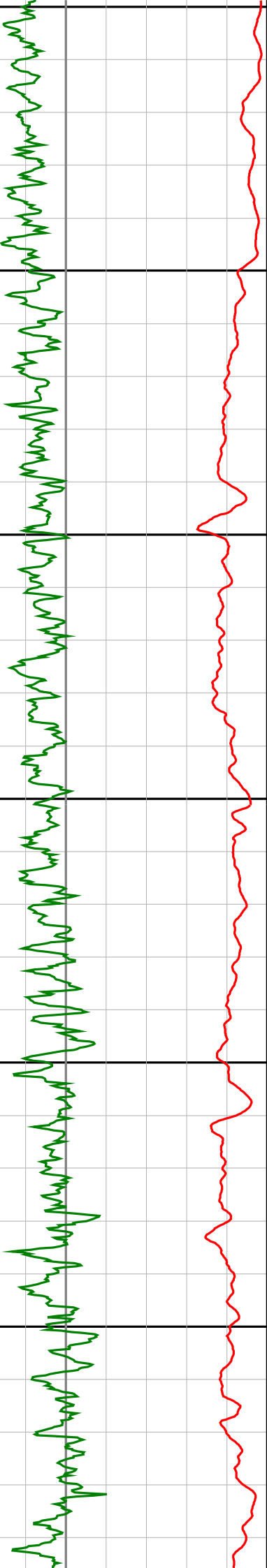
2275

2300

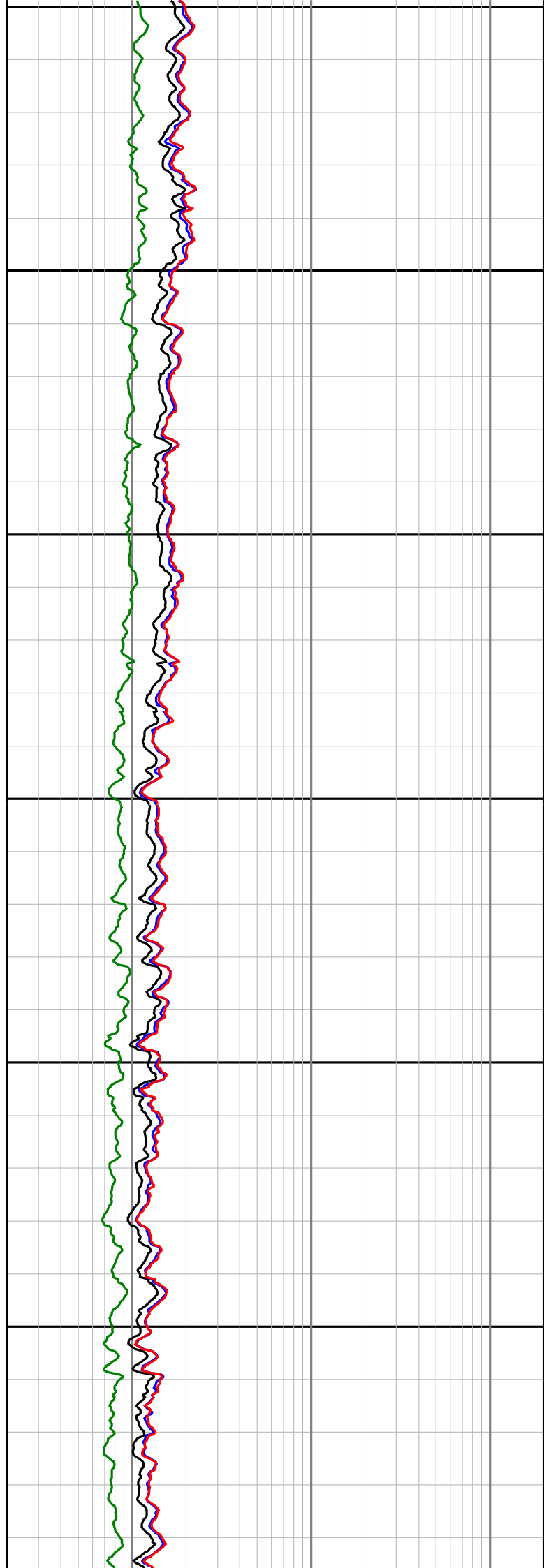
2325

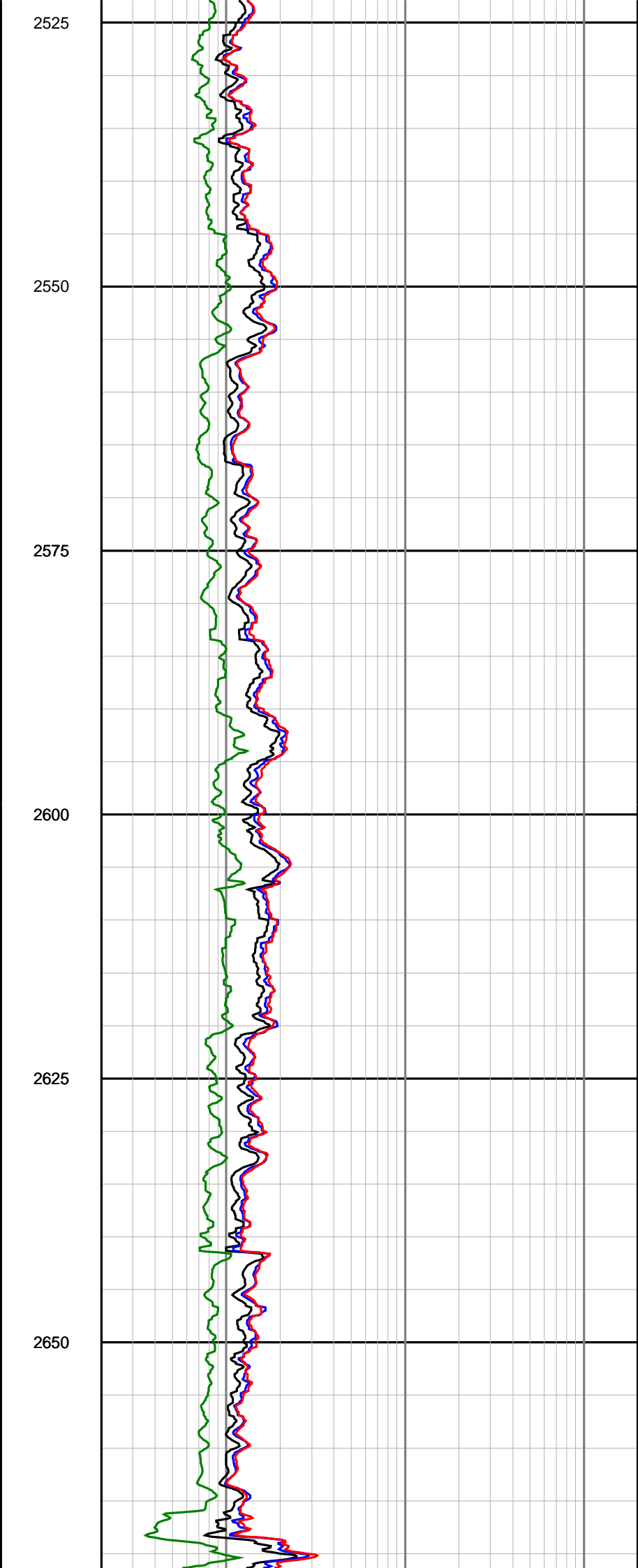
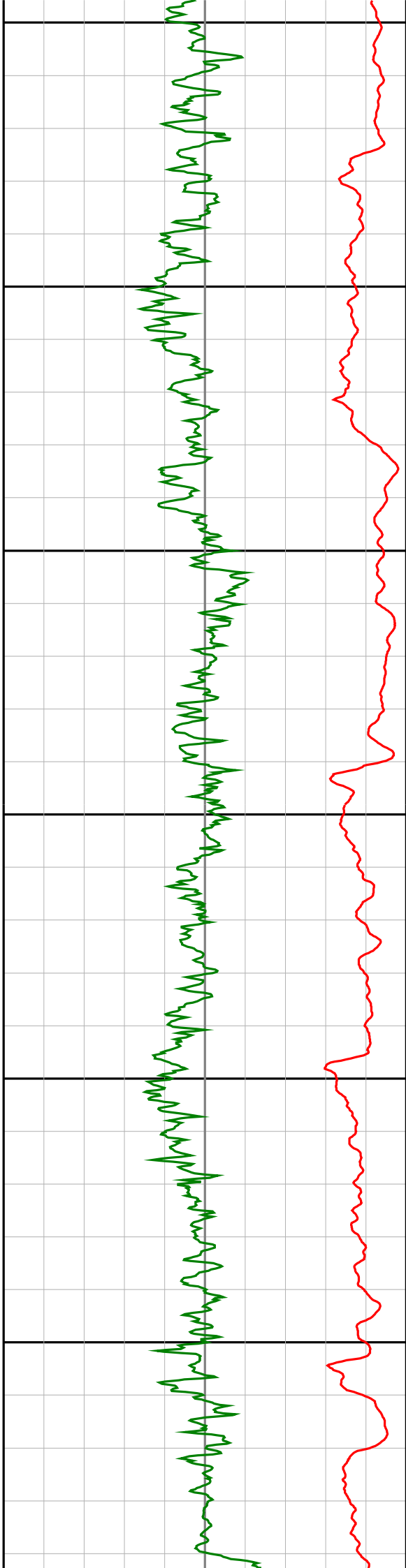
2350

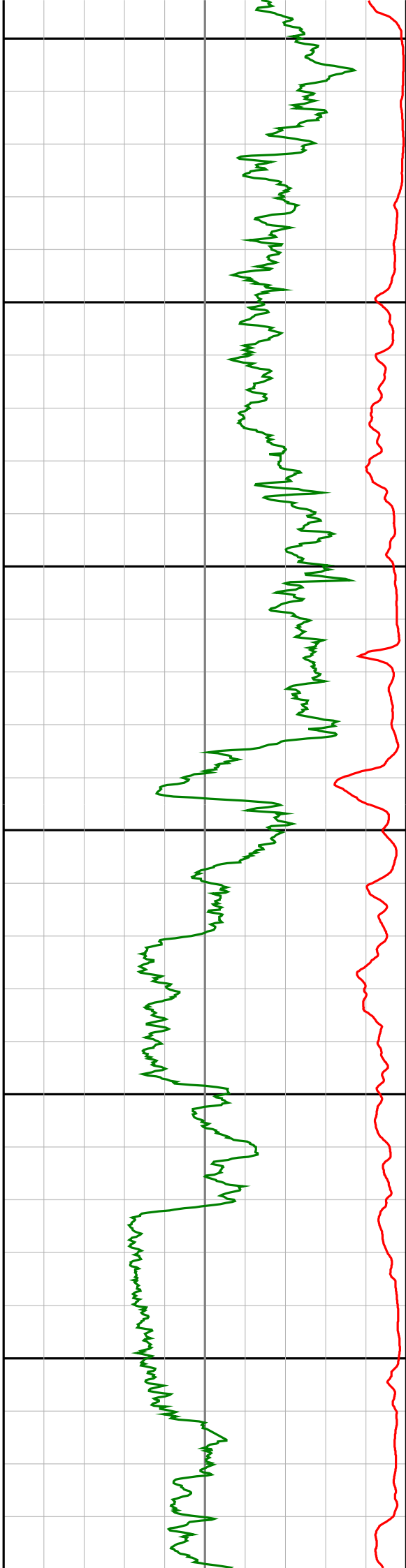




2375  
2400  
2425  
2450  
2475  
2500







2675

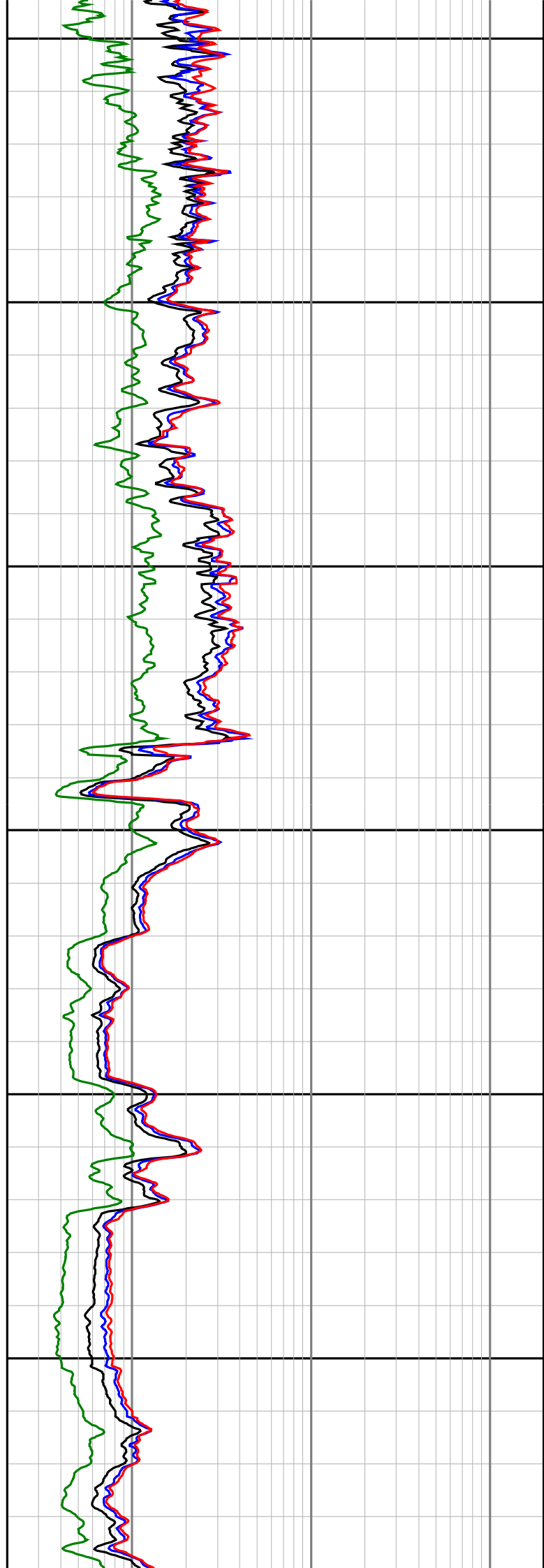
2700

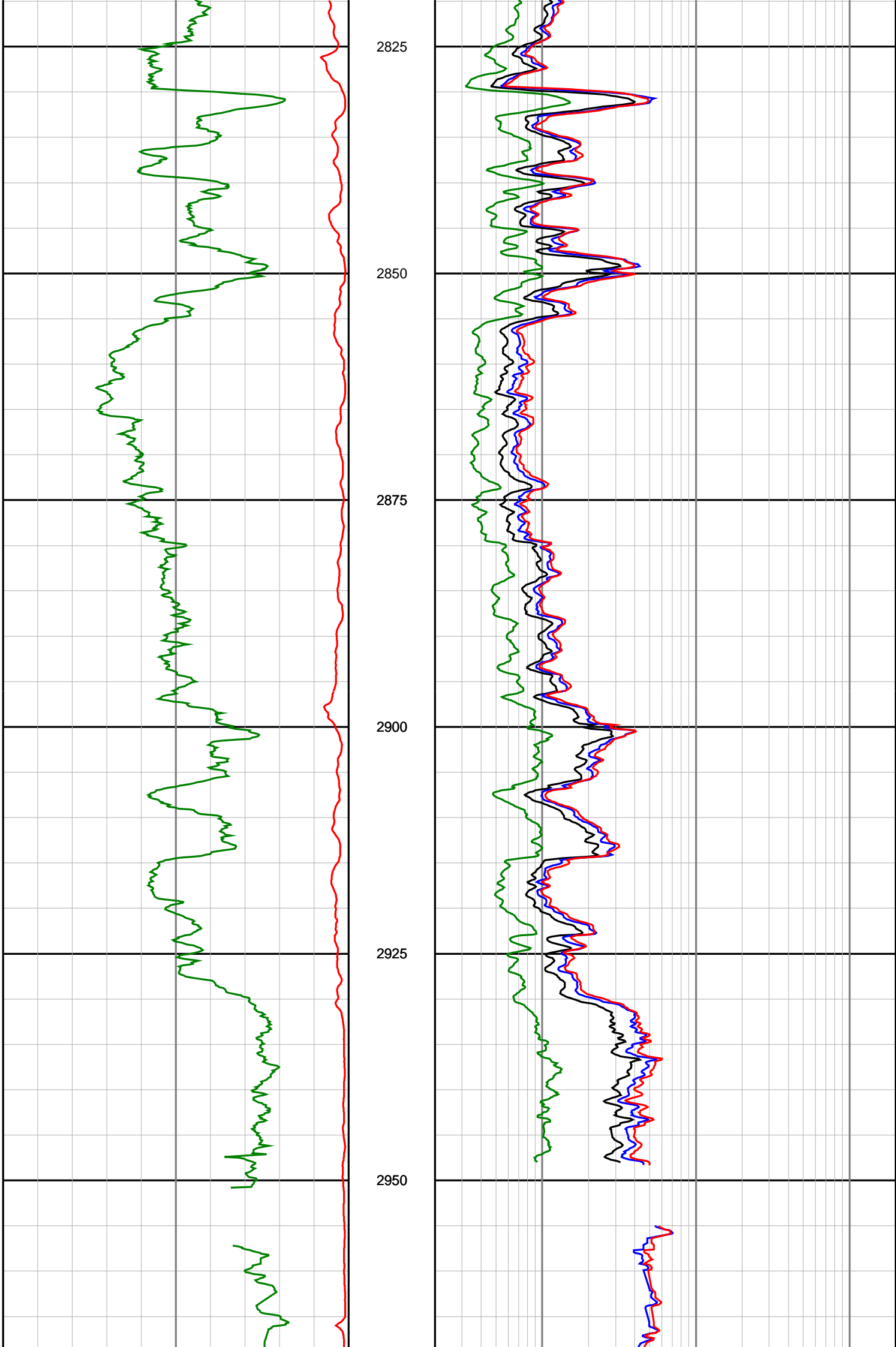
2725

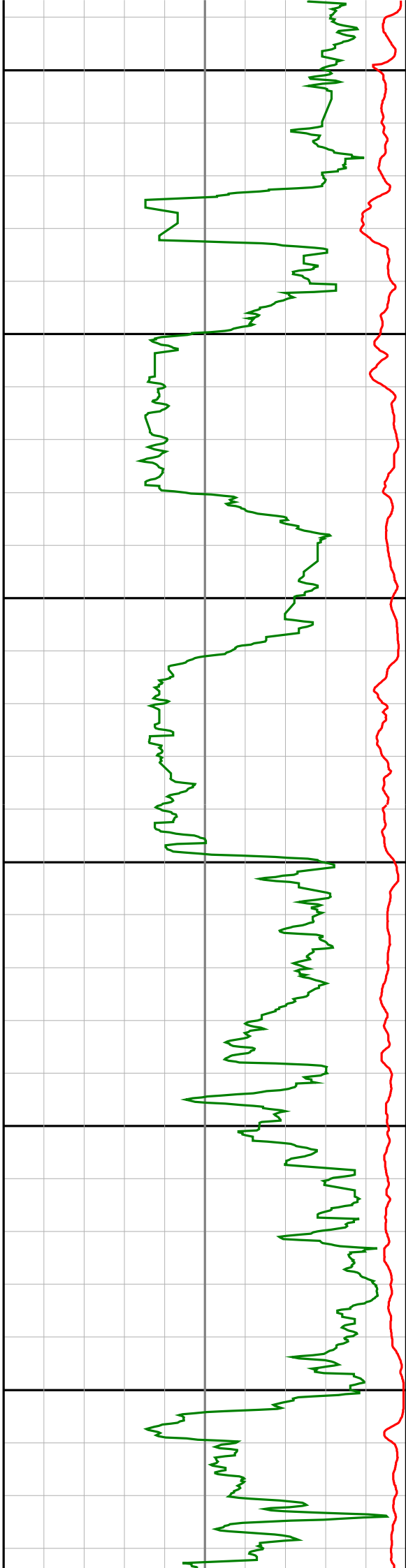
2750

2775

2800







2975

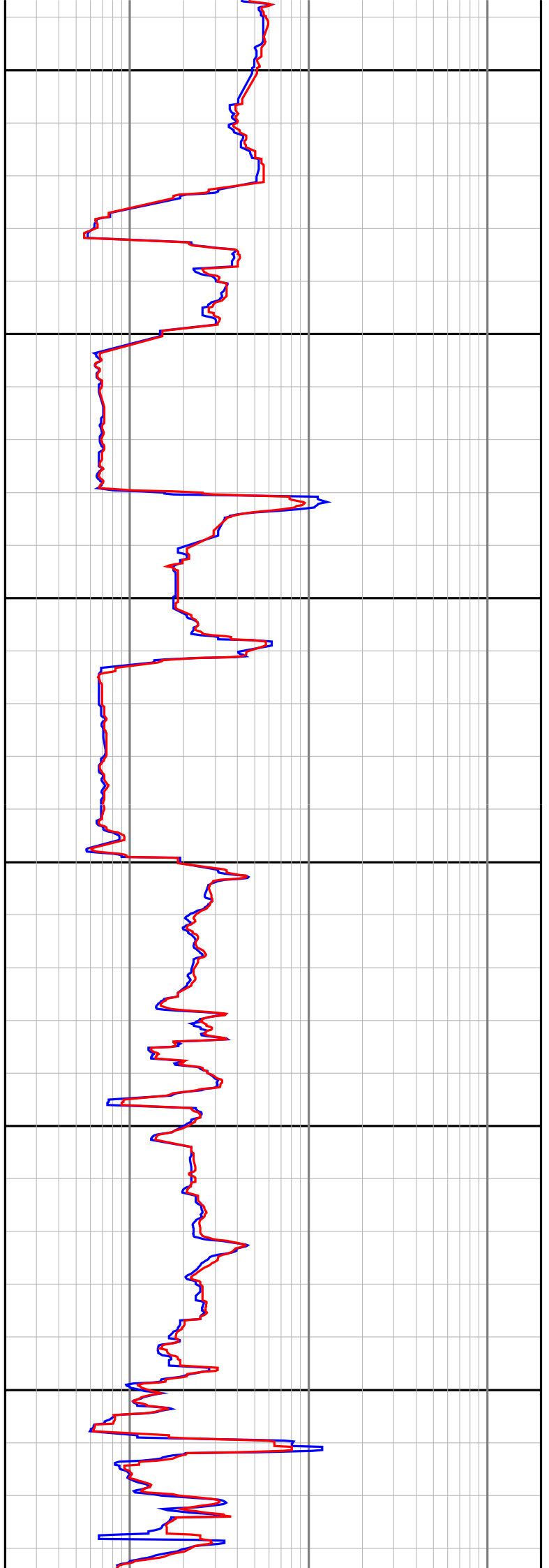
3000

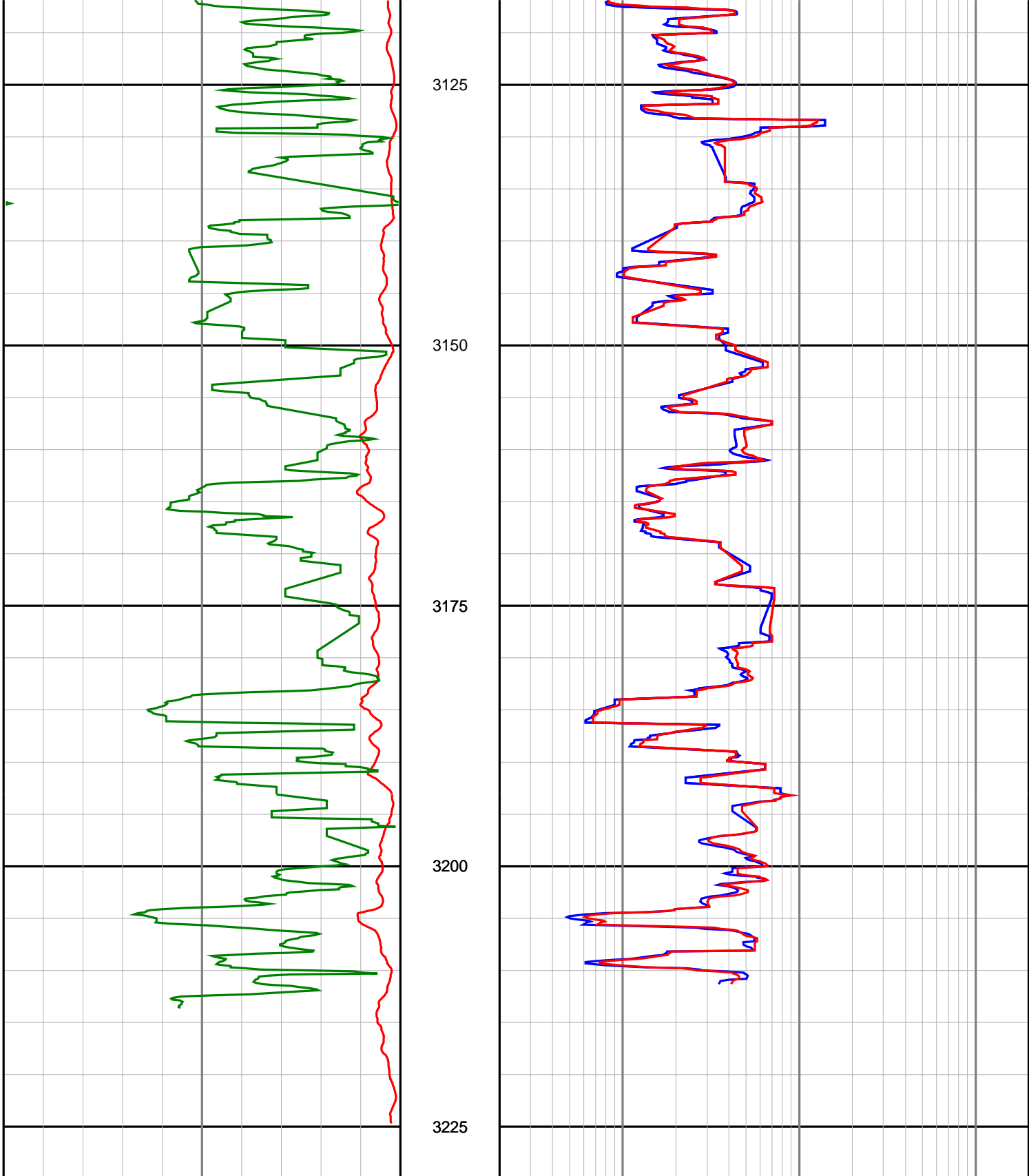
3025

3050

3075

3100





**Gamma Ray  
(SGRC)  
api**

0 200

**Rate Of Penetration  
(SROP)  
m/hr**

500 0

**Depth  
MD  
1:500**

**Ext Shallow Phase Res  
(SEXP)  
ohmm**

0.2 200

**Shallow Phase Res  
(SESP)  
ohmm**

0.2 200

**Medium Phase Res  
(SEMP)  
ohmm**

0.2 200

**Deep Phase Res  
(SEDP)**

